

LC-MS: Advanced Techniques and Applications

Presented by Jack Henion, Ph.D.

ASMS 2019

1-2 June 2019

Atlanta, GA



**Professor Emeritus
Analytical Toxicology
New York State College of Veterinary Medicine**

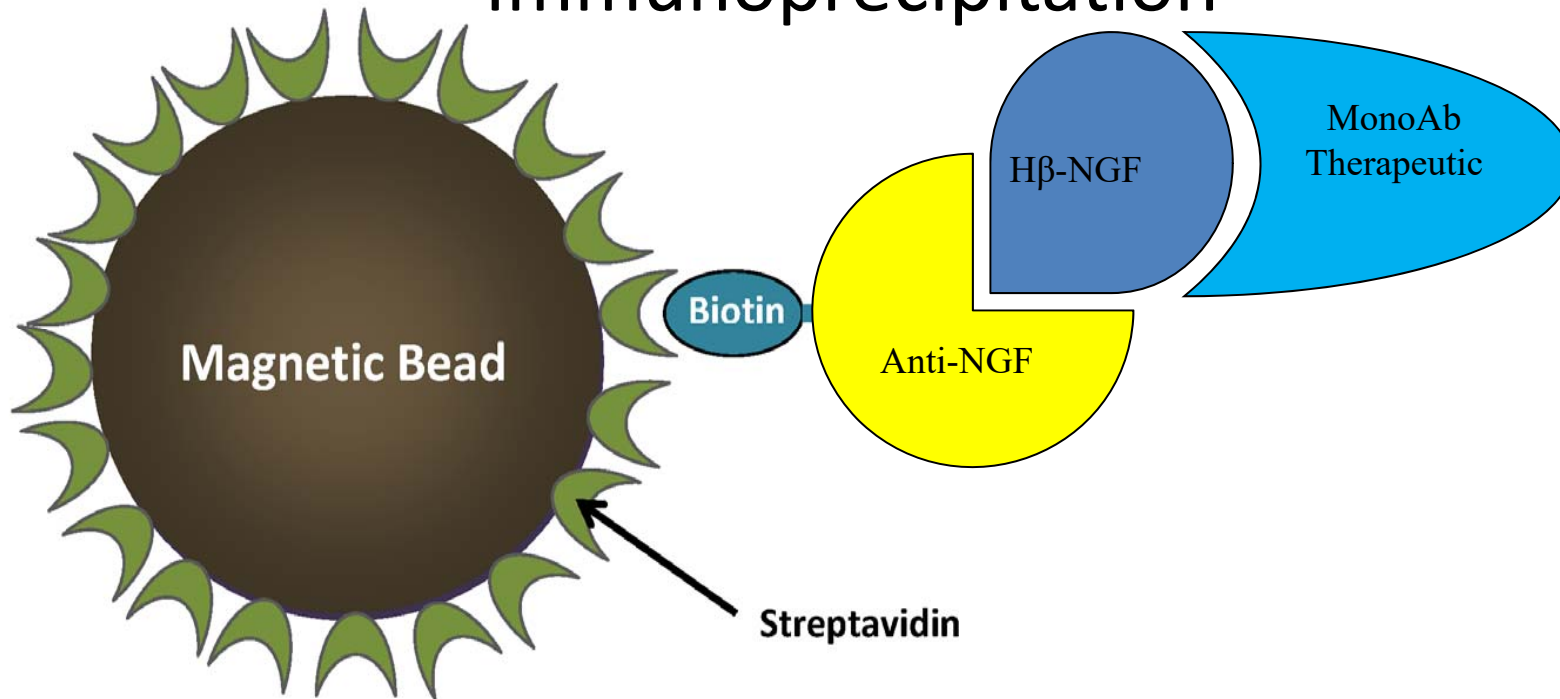
**Cornell University
927 Warren Dr.
Ithaca, NY 14850
Cell: 607 279 9043
E-mail: jdh4@cornell.edu**



**Advion, Inc.
61 Brown Rd.
Ithaca, NY 14850
Desk phone: (607) 882 9942
Cell: 607 279 9043
E-mail: henionj@advion.com**

Advion Web Site: <http://www.advion.com>

Immunoprecipitation

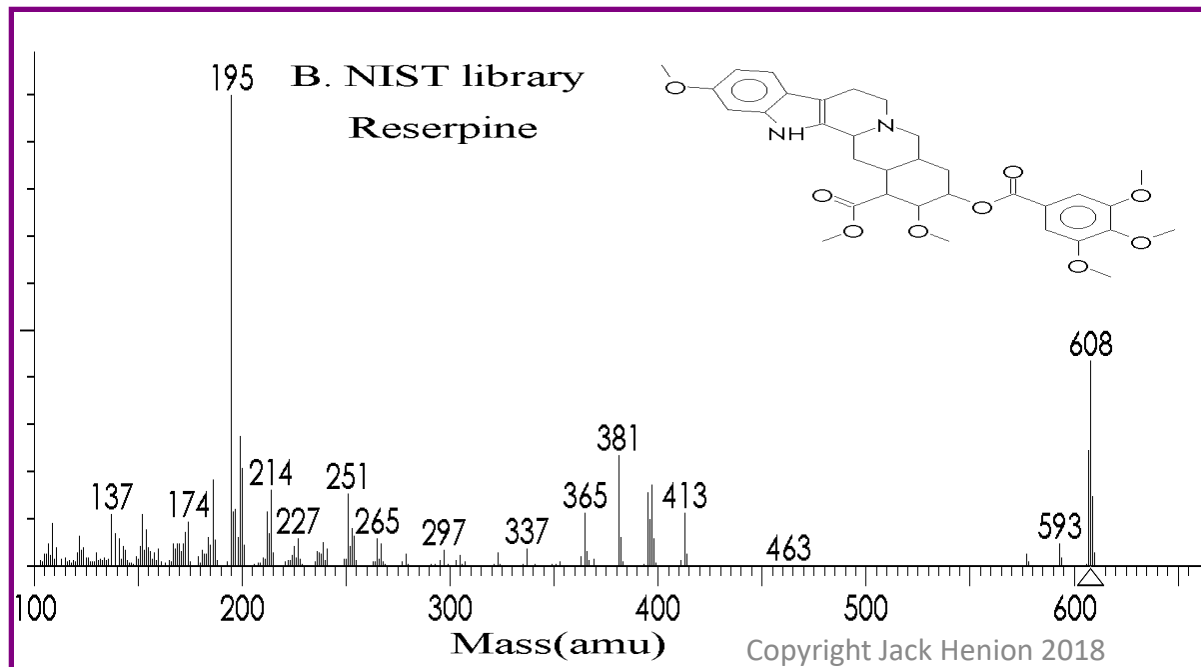
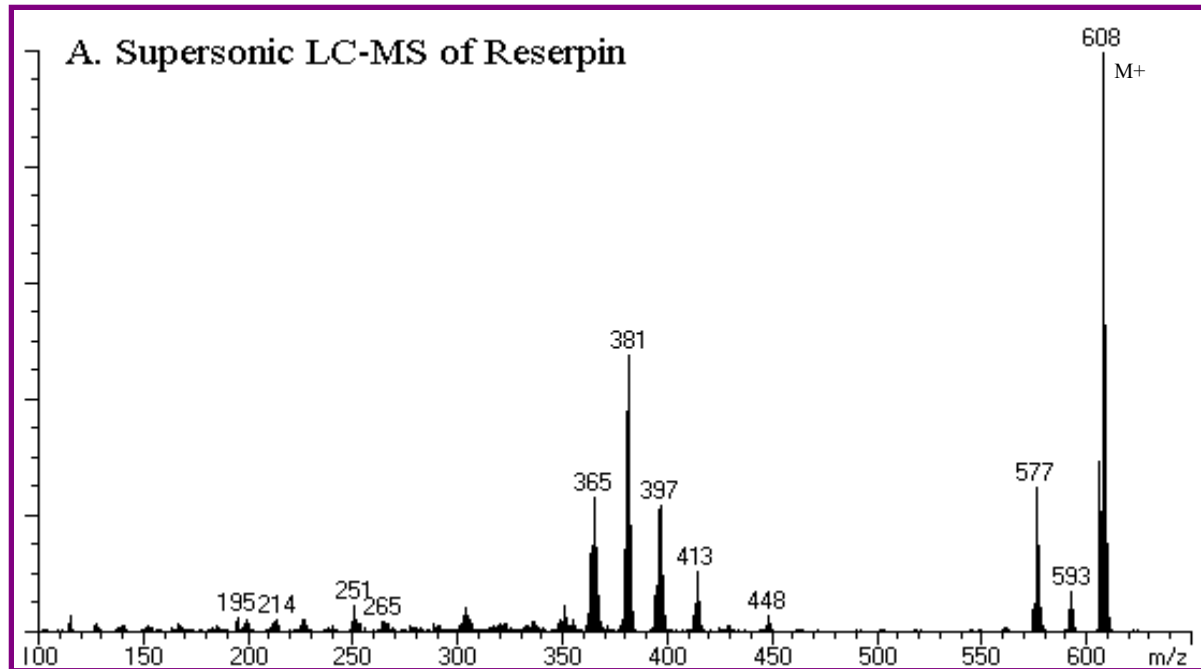


- **Streptavidin-coated magnetic beads are combined with the samples the following morning using a Hamilton MicroLab STAR**
- **A 16 Step immunoprecipitation extraction procedure is used to capture the biotinylated anti-NGF/h β -NGF**
- **The beads are washed and eluted by lowering the pH.**

Gary A Schultz, Kathlyn McCardle, & Hendrik Neubert, Large-scale implementation of sequential protein and peptide immunofinity enrichment LC/nanoLC-MS/MS for human β -nerve growth factor, *Bioanalysis* (2016) 8(8), 753–764

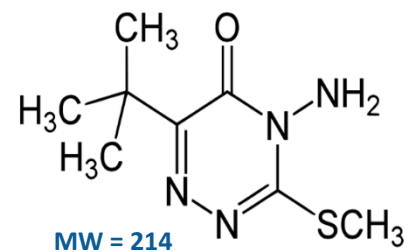
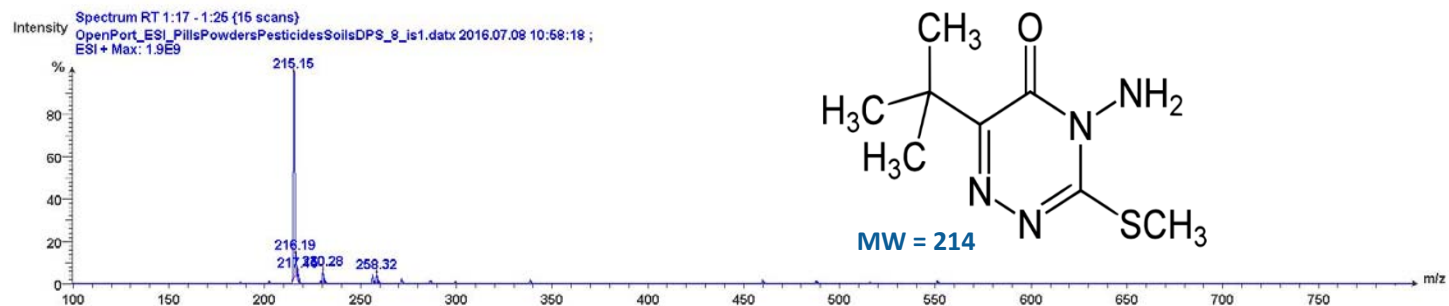
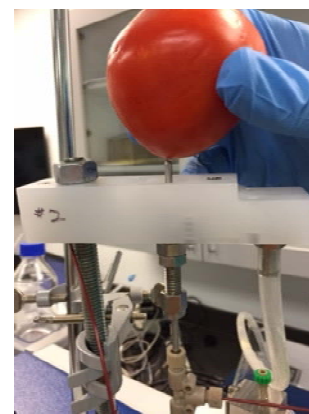
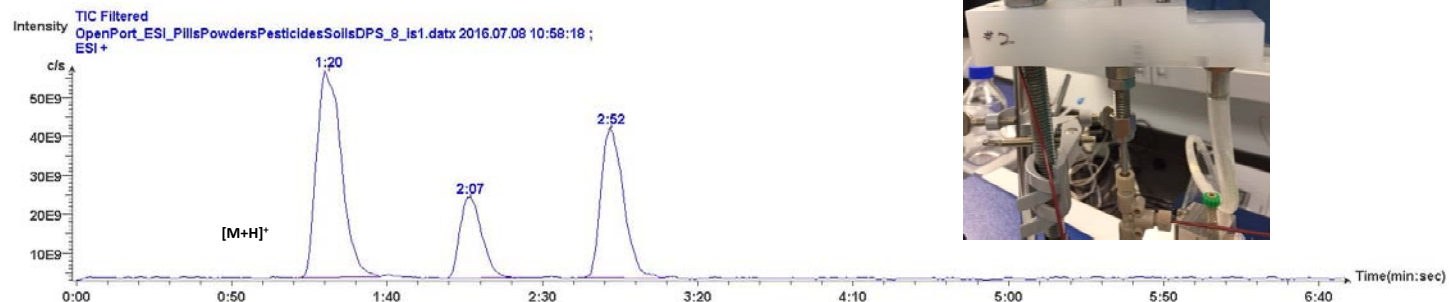
Reserpine

A comparison of Reserpine 70 eV EI mass spectrum obtained with the EI-LC-MS with SMB system and the NIST library spectrum.

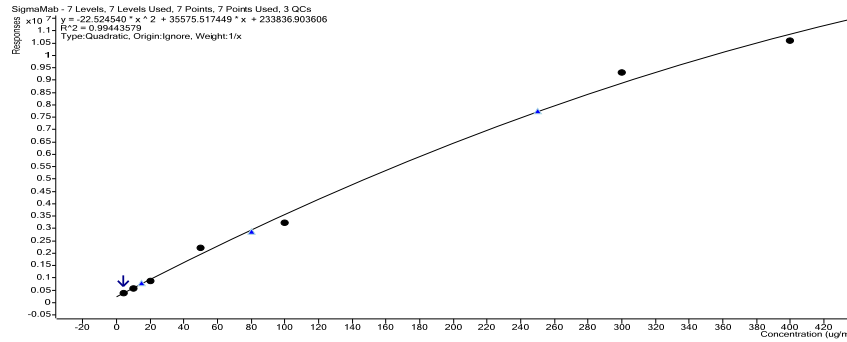


OPSI of Tomato Previously Sprayed with Glory Pesticide

ESI POSITIVE ion

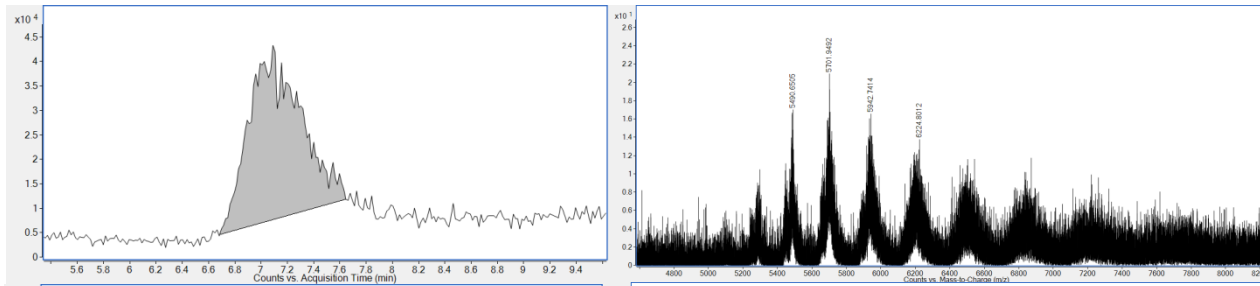


Calibration curve and representative chromatograms and mass spectra of SigmaMab under native conditions

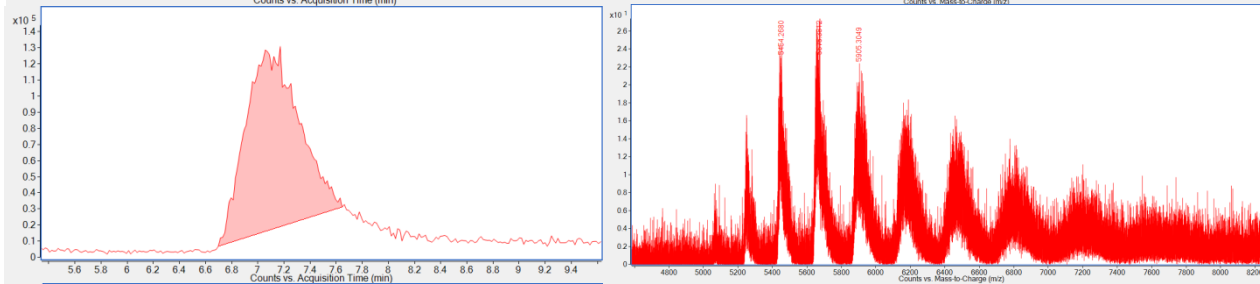


(A)

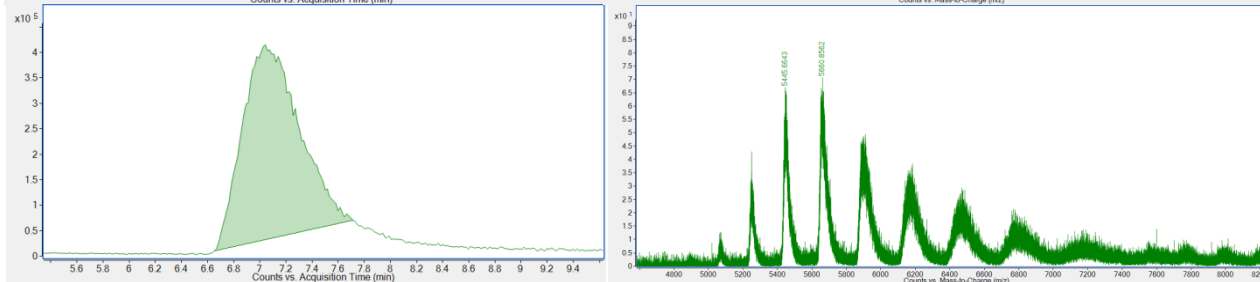
LLOQ



MQC



ULOQ



(B)

ZipChip Interface Mounted on Q Exactive Plus



Transportable Mass Spectrometry

